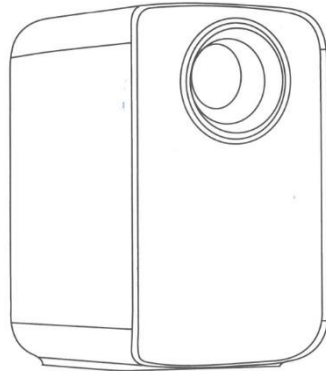


# User Manual - A6 Projector



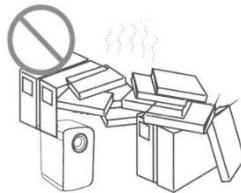
## Important safety considerations

### Attention:

Thank you for purchasing this product of our digital projector series. Please read this “User's Manual” carefully in order to use this device correctly. Keep this manual in a safe place so that you can refer to it whenever necessary after reading it. Please read this “User's Manual” to understand all the information you need to know for the correct use of the projector or in case of problems.

The following safety instructions ensure a long service life of the projector and prevent fire or electric shock. Be sure to read them carefully and heed all of the following warnings.

- Do not install the projector in places with inadequate ventilation.



- Do not install the projector in hot and humid places.



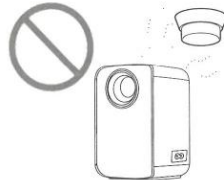
- Do not block ventilation openings (inlet or outlet).



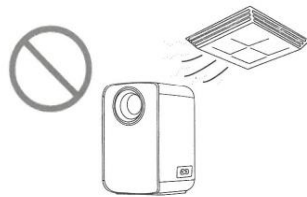
- Do not install the projector in dusty or smoky places..



- Do not install the projector near a temperature and smoke transducer. It may cause sensor failure.



- Do not install the projector in places where hot or cold wind from the air conditioner blows directly. Otherwise, the projector may fail due to moisture condensation or temperature rise.



## Important safety considerations

### Installation

- Use the projector in a dark room for best results.
- Use the projector with extreme caution to avoid dropping or bumping the projector, which could damage internal components.

### Power supply

- Use the power cord with caution to avoid bending it improperly. A damaged power cord may cause electric shock or fire.
- Unplug the power cord from the power outlet after using the projector.

### Cleaning

- Unplug the power cord from the projector.
- Use a damp cloth to clean the cabinet regularly. You can use neutral detergent for tough stains. Do not use strong detergents or solvents such as alcohol or thinner.
- Use an air brush or special lens paper to clean the lens and be careful not to scratch or wear the lens.

- Regularly clean the ventilation opening and speaker with a cleaning tool such as a brush, soft brush or vacuum cleaner. The projector will overheat with clogged dust, causing failure. Please use only cleaning tools such as a soft brush. Do not use rigid accessories, such as a crevice cleaning tool, to avoid damaging the projector.

#### **Notes on fire and electric shock**

- Ensure that there is adequate ventilation and a clear exit to prevent heat build-up inside the projector.
- Avoid dropping foreign objects such as paper clips and pieces of paper inside the projector, do not attempt to retrieve any such objects. Do not insert any metal objects, such as iron wire or a screwdriver, into the projector. Be sure to turn off the power immediately and have qualified professional service personnel remove any objects that fall into the projector.
- Do not place any liquid on the projector.

#### **Moving**

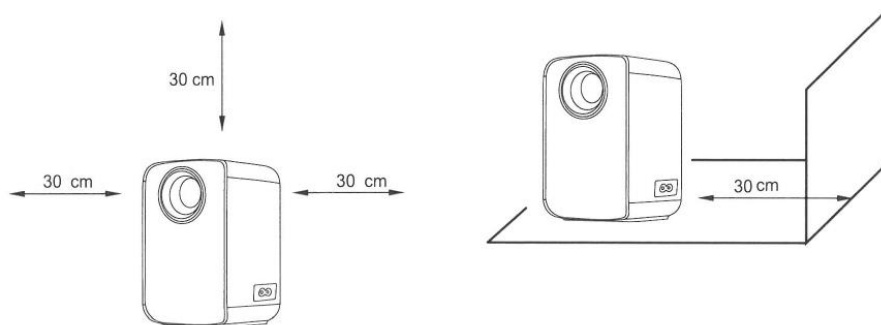
- Use soft packing materials and attach the lens cap to protect the lens when moving the projector. Also, do not subject the projector to strong mechanical vibrations.

#### **High temperature warning**

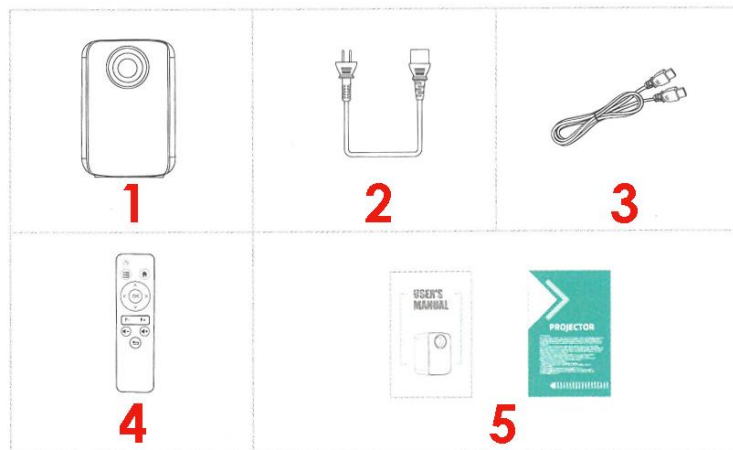
- During and after projection, the temperature near the output will rise, so touching it may cause burns. Do not look into the lens, as serious eye injury may occur.

#### **Installation away from walls**

- Please leave at least 30 cm from the wall to maintain the performance and reliability of the projector.



## The package includes:



1. Projector

2. Power cable

3. HD Cable (Optional),

4. Remote control (Batteries not included)

5. User's manual.

## Tips:

### 1. Blurred image

\* First, correct the keystone distortion to a rectangle.

\* Second, press the F+ or F- auto focus button on the remote control to obtain the best sharpness.

\* Selectable projection distance: 2.6 - 14.5 ft.

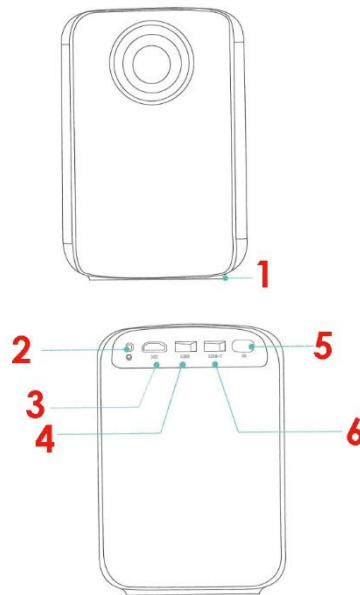
\* If any parts are missing, please contact our customer service via the email address of the retailer where you purchased this device.

### 2. Mounting hole

This equipment has a hole that allows mounting on tripods on the floor or bases to fix it from the ceiling, the projector is compatible with a standard camera tripod and screw foot tripods for projectors. You can rotate 360° the screw to adjust to different angle needs.

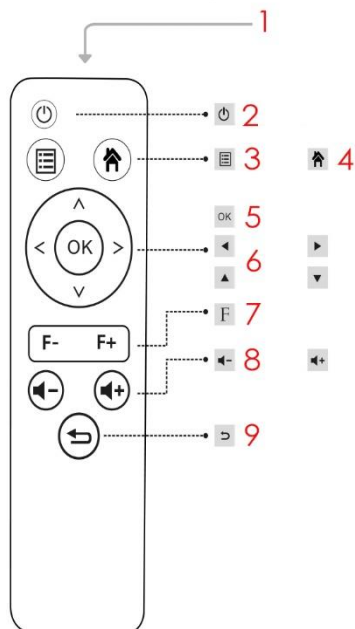
## Check before use

### Names and functions of projector components



- |                          |                      |   |
|--------------------------|----------------------|---|
| 1. Anti-slip rubber base | 2. Audio output port | 3. HD                                     |
| 4. USB port (Input)      | 5. Infrared          | 6. USB-T port (5V output) (Charging only) |

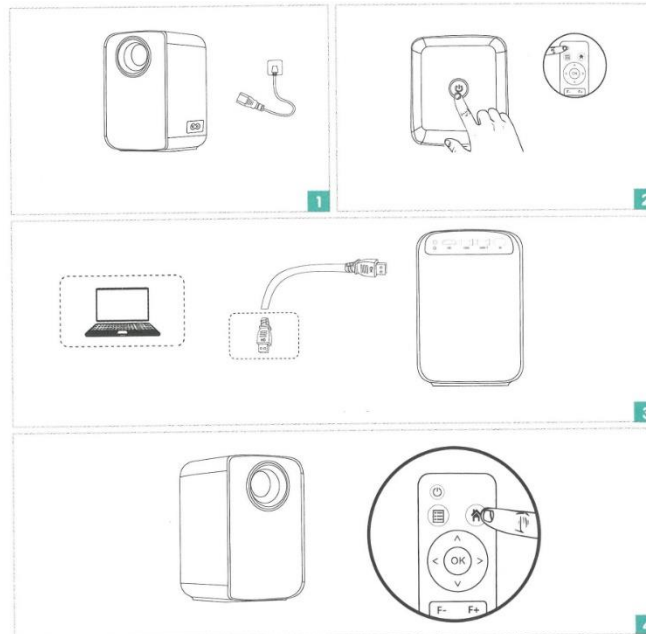
### Conozca el mando a distancia (versión multimedia)



- |                         |                           |                     |
|-------------------------|---------------------------|---------------------|
| 1. Infrared Transmitter | 2. On/Off Button          | 3. Menu             |
| 4. Home select button   | 5. OK button              | 6. Movement cursors |
| 7. Focus button         | 8. Volume up/down buttons | 9. Return button.   |

## Let's start:

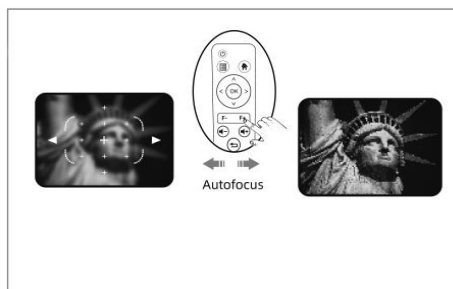
1. Plug the power cord into the projector.
2. Press the power button to turn on the projector.
3. HD cable: Connect the projector to the HD port compatible device.
4. Select the input source.



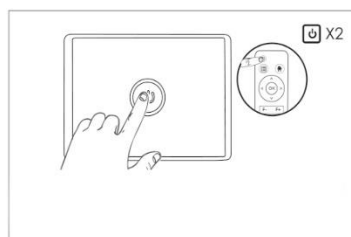
Long press the F-button to quickly focus the screen, fine tune with short press.

Press F- button (Close-up range adjustment)

Press F+ button (Remote adjustment)

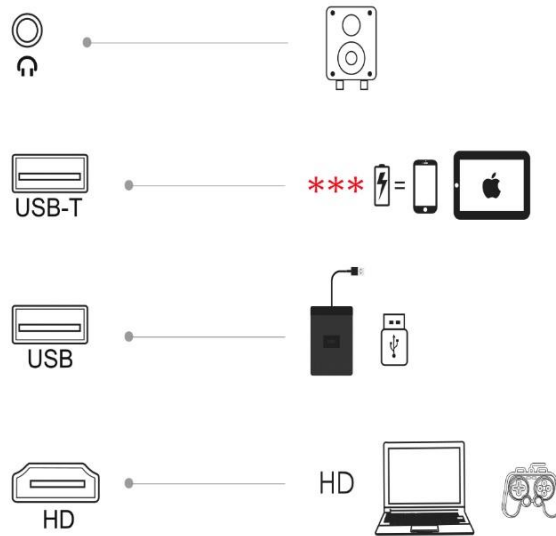


Press the power button twice to turn off the projector.



## Projector interface connection

Connect multiple devices and applications.

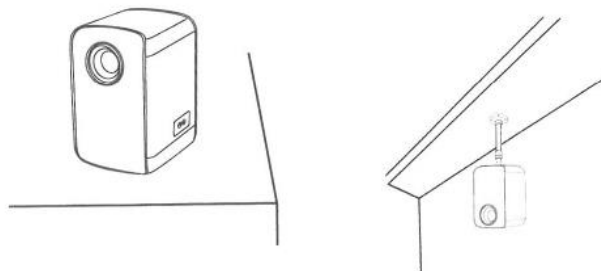


**WARNING: the USB-T port is for charging mobile devices only.**

## How to install and debug a projector quickly

Installing the projector

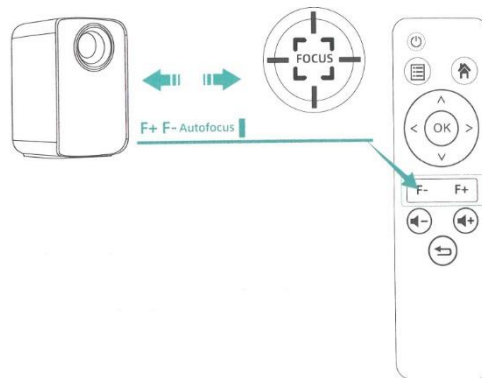
You can choose to place the projector in the horizontal plane or attach it to a hanging bracket.



**Attention:**

The hanging bracket is an accessory that is not included.

## Focal length adjustment

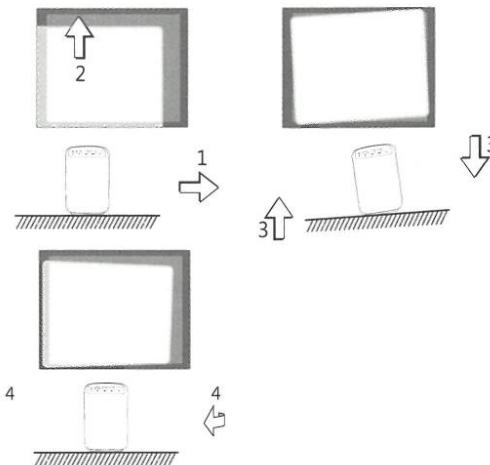


Once the projector is placed in a fixed position, the distance from the projection screen to the wall surface is adjusted by pressing the F- button for remote adjustment and then pressing the F+ button (continuously or by clicking) for fine adjustment.

## How to install and debug a projector quickly

Adjust the projected image on the screen

Check the horizontal and vertical configuration of the screen



(1) Shift the projector to the side if the screen is offset to the left or right (align the center of the screen with the center of the projector lens).

(2) For vertical offsets, adjust with the front adjuster.

(3) Place the projector on a horizontal plane for angular shifts.

(4) The projection screen as shown in the figure indicates that the projector is not aligned with the screen. Adjust the location of the projector to align with the screen.





**Caution: Change the projection mode in case the projector is suspended from the ceiling, or in a rear projection system.**

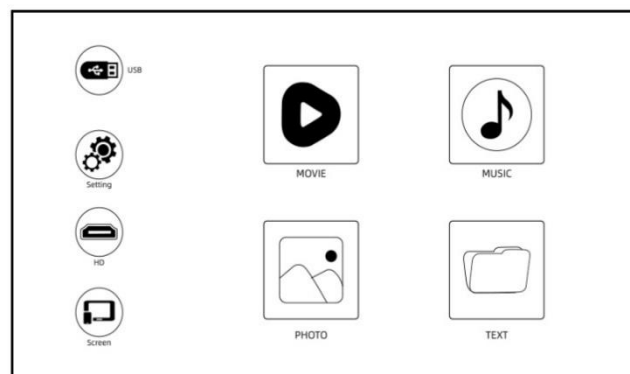
### Safe shutdown

- (1) Use the “off” key on the remote control to turn off the projector.
- (2) Press and hold the “off” key on the control panel to turn off the projector.
- (3) Press the “off” key on the port and turn off the projector according to the instructions.
- (4) Unplug the power cord after turning off the projector to save power.

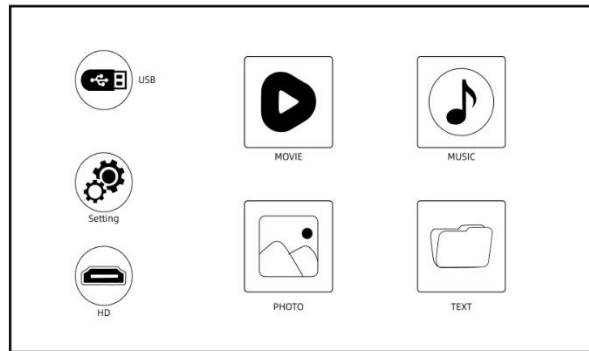
### Change of input source

1. On the master display interface select the appropriate input source (HD, Display, USB - Movie - Music - Photo - Text) using the remote control by pressing the keys.

(Note: The USB icon on the main screen lights up automatically after recognizing the USB) as shown in the figure below.



(Screen Master interface)



(Basic moderator interface)

2. Press the “select input” button on the remote control and enter the input source interface. You can choose HD or Screen as input source.

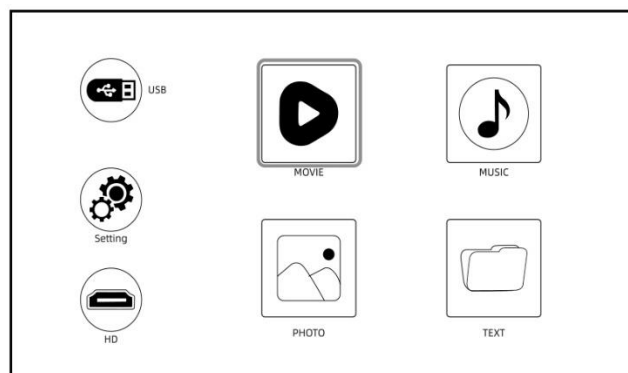


## Play a video

The video files on the USB device can be played back in the following steps:

Insert the USB device into the USB port next to the HDMI (Remarks: The USB icon on the master display interface lights up automatically after the USB is recognized).

2. On the main screen, select “Movie” with the remote control and press “OK” key to move to the next step.



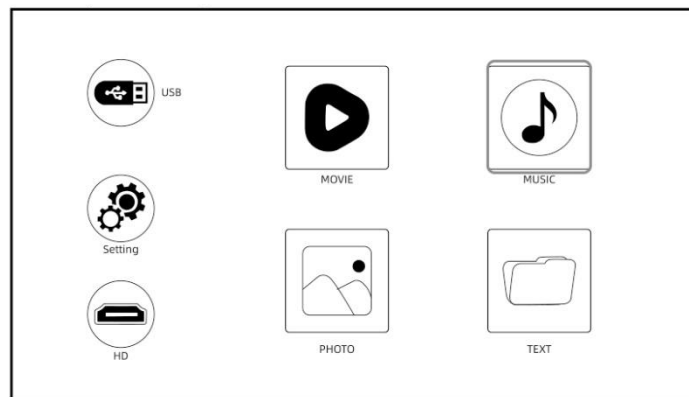
Attention: Only MP4, RMVB, AVI, RM, MKV and other video formats are supported for video playback.

## Play music

Music files on the USB memory device can be played back in the following steps:

Insert the USB device into the USB port next to HDMI (Remarks: The USB icon on the main interface of the display lights up automatically after the USB is recognized).

2. On the main screen, select “Music” with the remote control and press “OK” key to move to the next step.



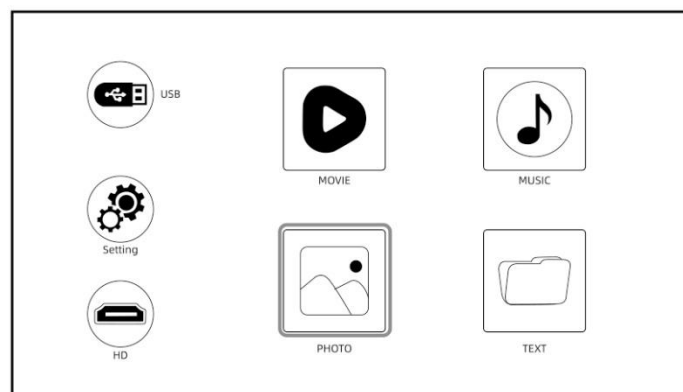
**Attention:** Only MP3, WMA, AAC, FLAC, APENAV and other audio formats are supported in audio playback.

## Play image

Image files on the USB memory device can be played back in the following steps.

1. Insert the USB device into the USB port next to the HDMI (Remark: The USB icon on the main interface of the display lights up automatically after the USB is recognized).

2. On the main screen, select “Photo” with the remote control and press “OK” key to move to the next step.



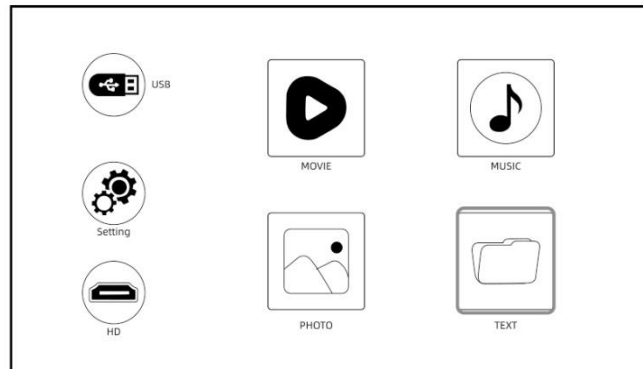
**Attention:** Only JPG/JPEG, BMP, PNG and other image formats are supported for image playback.

## Play a text

The text files on the USB memory device can be played back in the following steps:

Insert the USB device into the USB port next to the HDMI (Remarks: The USB icon on the main interface of the display lights up automatically after the USB is recognized).

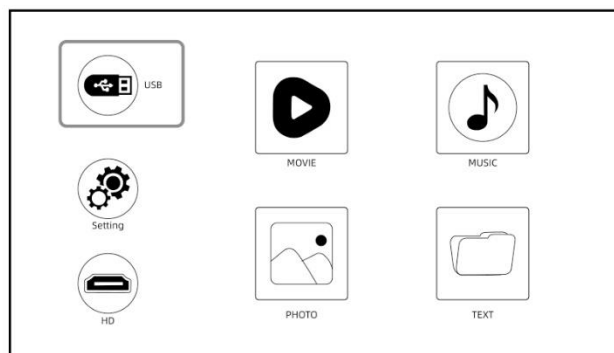
2. On the main screen, select “Text” with the remote control and press the “OK” key to go to the next step.



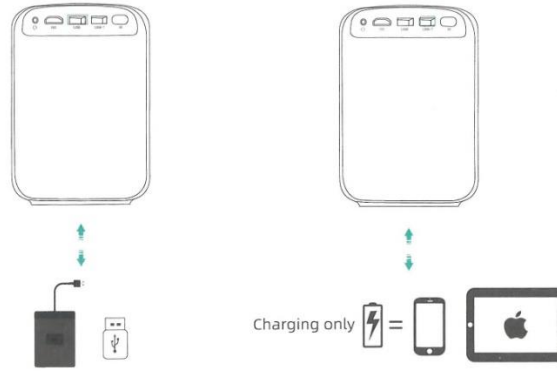
Attention: Only text formats are supported for this function.

## USB connection

Insert the USB device into the USB port next to the HDMI (Remarks: The USB icon on the display master interface lights up automatically once the USB is recognized. If the USB icon on the interface does not light up blue, you will need to insert it again or check if the USB drive is defective).



**USB-T port is a 5V power supply for low power charging only (USB-T port for charging when using a charging cable for connection to your mobile device).**



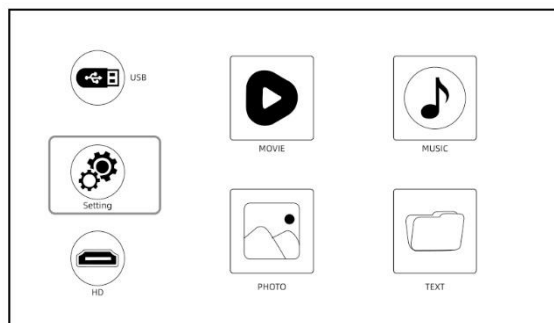
**List of supported formats:**

 Movie	avi,mkv,mp4,mov,mpg mpeg,ts,tp,m2ts,dat flv,swf,asf,vob,rm rrmvb,3gp,3gpp etc.
 Music	MP3,WMA,AAC,FLAC APE,WAV etc.
 Photo	JPG,JPEG,BMP,PNG,GIF etc.
 Text	TXT

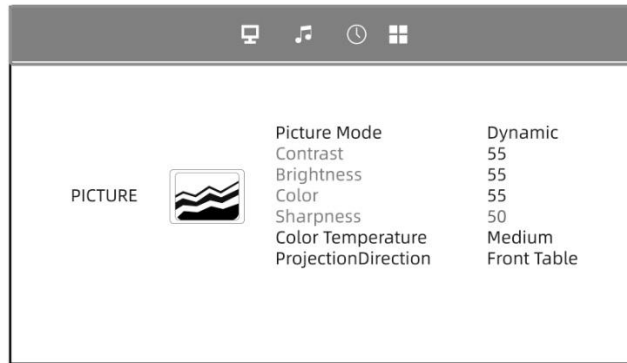
**Projection settings (Multimedia version)**

Achieve a better display effect with the appropriate settings. The main content of the projection can be adjusted in the following steps:

1. If you need to make adjustments, first select “Settings” on the main screen, and then press the “Ok” key on the control panel 2.

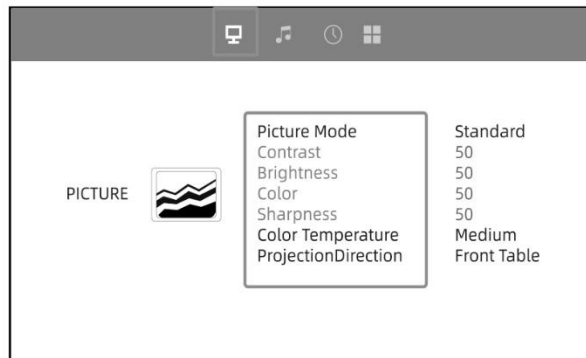


2. You can adjust “Picture”, “Sound”, “Time” and “Option”. Press “<” and “>” on the control panel to select the settings.



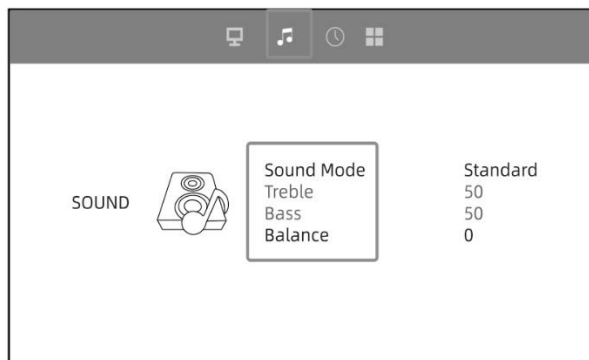
### 3. Image configuration:

Configure your projector and get the best image. Press the “Up” and “Down” keys on the control panel to select the best image setting. Press the “OK” key to confirm. Press the “Back” button on the remote control to go back to the “Back” button on the remote control.



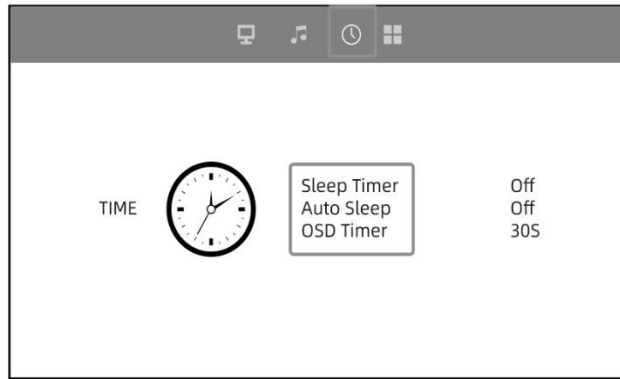
### 4. Sound adjustment:

Press “Up” and “Down” on the control panel to select the best sound. Press the “OK” button to confirm. Press the “Back” button on the remote control to return.



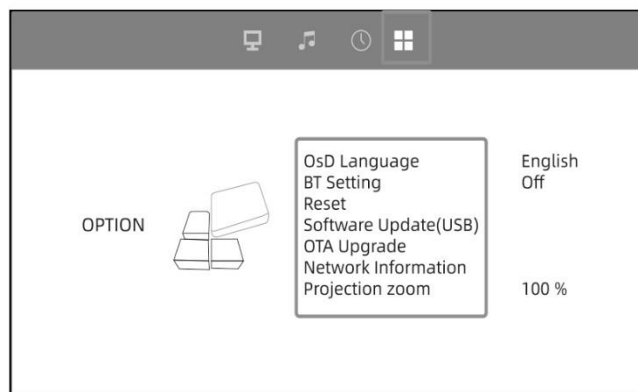
### 5. Setting the time:

Press “Up” and “Down” on the control panel to select the time setting. Press the “OK” button to confirm. Press the “Back” button on the remote control to return.

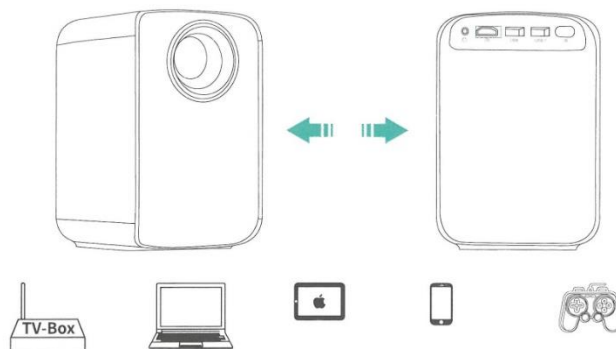


## 6. Ajuste de la proyección:

Press “Up” and “Down” on the control panel to select the best projection setting. Press the “OK” button to confirm. Press the “ ” button on the remote control to return. Here you can connect the Wifi and Bluetooth audio output.



## HD connection

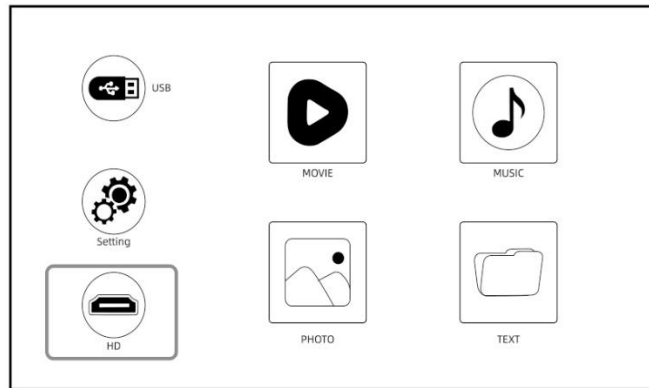


Use the HD port to connect HD compatible computers and devices. Once connected, select the HD signal source.

1. Mini Display Port to HD Cable, Thunderbolt to HD Adapter are required to be compatible with Apple iMac, MacBook, Tablets, ThinkPad, etc...

2. Supported Resolutions: 640 x 350@60Hz, 720 x 400@70HZ, 640 x 480@60/72/75Hz, 800 x 600@56/60/72/75Hz, 1024 x 768@60/70/75Hz, 1280 x 768@60/75Hz, 1280 x 800@60Hz, 1366 x 768@Hz, 1280 x 1024@60/72/75Hz, 1400 x 1050@60Hz, 1440 x 900@60/Hz, 1680 x

1050@60Hz, 1920 x 1080@60Hz, 720 x 576i@50Hz, 720 x 480i@60Hz, 720 x 576P@50Hz, 720 x 480P@60Hz, 1280 x 720P@50/60Hz, 1920 x 1080i@50/60Hz.

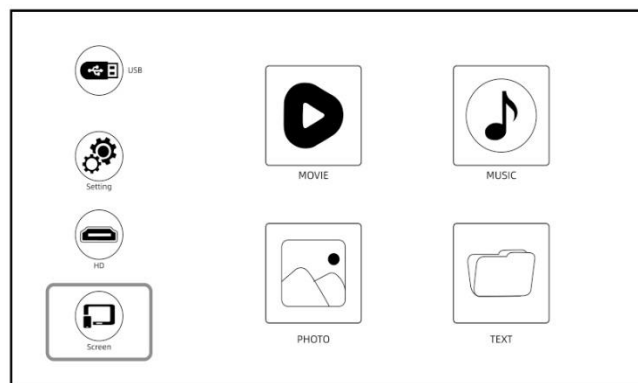


## Projector “Miracast” Version - Wireless Connection”

### Wireless connection - Miracast via iOS

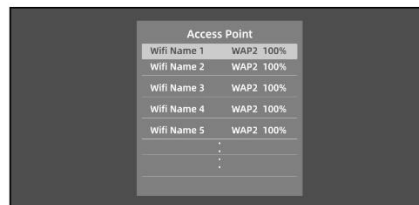
Streaming with the Wi-Fi of your router (wireless connection)

(Turn on the projector, select “Screen” as the input source to enter the Screen Mirroring interface.)

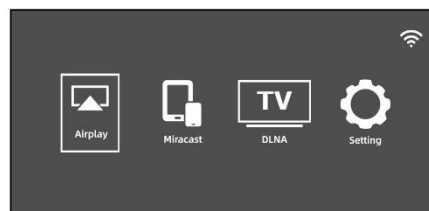
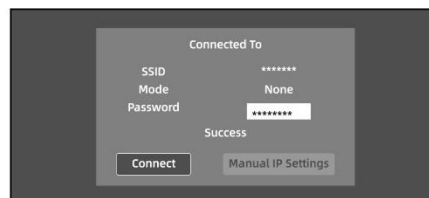




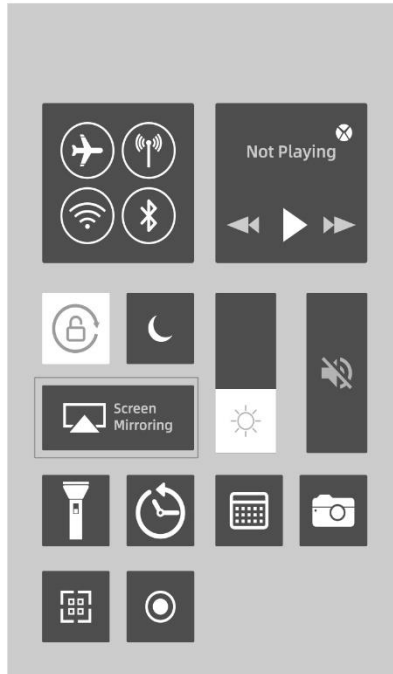
1. Click on “Settings” to connect your home WiFi.
2. Check the “Network On” box, press the “OK” key to open the WiFi.
3. Press the “Up” and “Down” keys on the operation panel to select the correct WiFi.



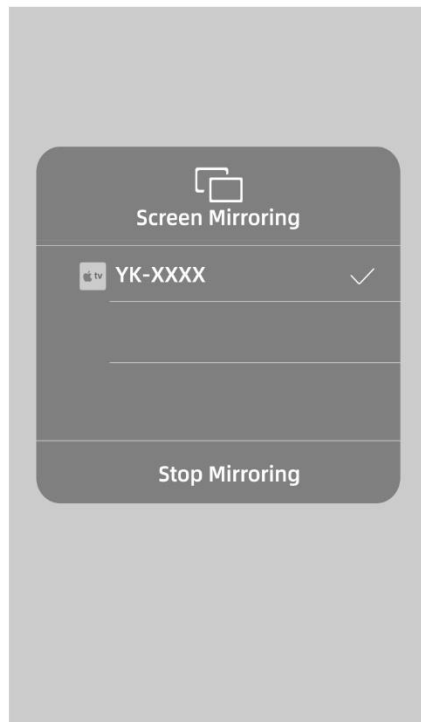
4. When the connection is successful, press the “back” button on the remote control.
5. Return to the “Display” interface.
6. Select “Air Play” to enter the Screen Mirroring interface of iOS system.



1. Return to the Wi-Fi settings on your iOS mobile device, then connect it to the same Wi-Fi as the router.
2. Swipe up the screen of your iOS mobile device and tap Screen Mirroring to find the projector.
3. Then select YK-XXXX from the search results to connect.



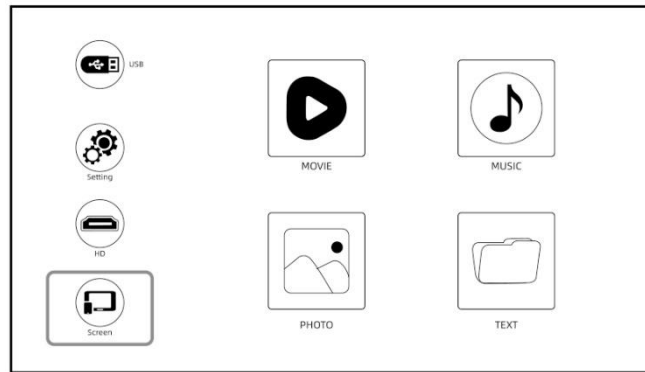
The screen of your iOS mobile device will be projected on the wall/display via wi-fi after a successful connection.



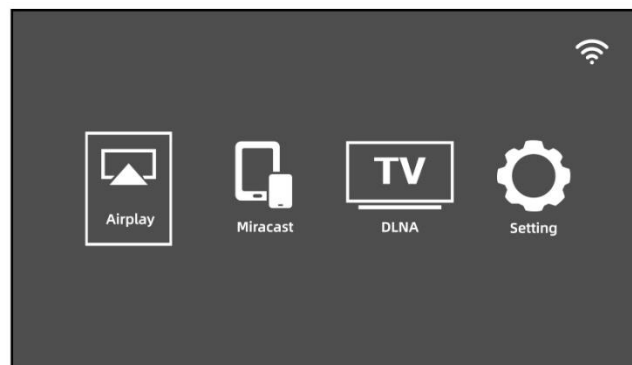
## Wireless connection - Miracast via Android

To enable this feature, your Android device must support multi-screen/wireless display. The names may vary depending on the device.

(Turn on the projector and select Display as the Input Source.)



Select "MiraCast" to enter the screen mirroring interface of the Android system.



- Activate the multiscreen function on your Android device and search for the projector, select "YK XX:XX:XX:XX:XX:XX:XX", click to connect. The screen of your Android device will be projected on the wall/screen after successful connection.



- Note:

1. Make sure your mobile device is within 3 feet of the projector when using the wireless connection.
2. Some mobile devices do not support screen mirroring function, make sure your mobile device supports MHL function.

## Projector “DLNA screen projection” Version”

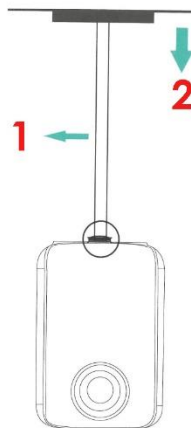
Click DLNA to access the screen, which supports screen projection operation of Android or iOS system devices with DLNA screen projection function.

1. Keep the projector connected to the same wifi router as Android or IOS system devices.
2. Access the DLNA interface Click a TV screen icon, a sign to the TV or other similar icons on the video playback interface of Android or IOS system devices to search for the projector's device number: YK-XXXX to connect.



### Place the projector on the ceiling

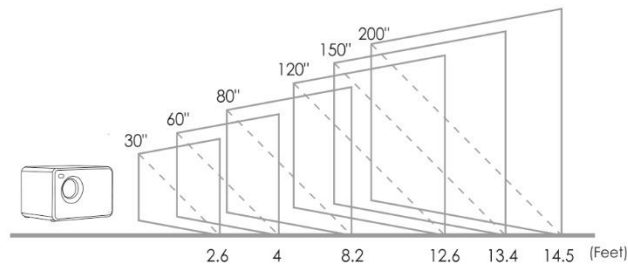
1. When installing the projector on the ceiling, purchase a projector bracket recommended by an installation professional and follow the supplied bracket instructions.
2. Before installing the projector on the ceiling, check whether the mounting structure can support the weight of the projector and the bracket.



1. Projector bracket

2. Ceiling

## Projection distance and screen size



Recommended projection distance (separation of projector from wall or screen): 2.6 - 14.5 ft.

## Frequently asked questions and answers

\*The problems listed below may occur during operation of the projector. Please refer to the possible factors that may cause the problem for troubleshooting. If you have any questions during use, please do not hesitate to contact our customer service team.

### IMAGE

**Question:** What can I do if there are black spots, bright spots or yellowing on the projection image?

**Answer:** The cause could be dust, it can be cleaned, please contact our customer service team for cleaning operation..

### AUDIO

**Question:** Why is the projector screen available, but no audio?

**Answers:**

- The projector or the connected device (PC, TV, etc.) is muted.
- The projector does not support the video format.
- Dolby sound is not supported, exit to play again.
- Firestick: Enter "Settings" and search for "Display and Sound". Then select enabled for "navigation sounds". Select Stereo or PCM for "surround sound".

**Question:** Why is projector audio available, but no display?

**Answers:**

- The video format is not supported by the projector.
- Encryption applied to the videos or the media player containing the video.

- If the projector lamp is off and only audio is played, the lamp is defective. Contact our customer service team to have it replaced.
- Try another HD cable if you select the HD input source.
- Try YouTube, if your screen mirroring player is Netflix, Amazon Prime, Hulu and Disney+. The problem may occur when playing these applications due to copyright.

**Question:** Is the video playback out of sync with the sound and picture?

**Answer:** The smoothness of playback is network related; if you are connected to a wifi device, you will usually have a slight delay.

## **SIGNAL**

**Question:** Why does the projection screen show no signal?

**Answers:**

- Make sure all cables are plugged in correctly and securely.
- Make sure the correct input source is selected. For example, if you connect with the telephone. Please follow the "Connections" section of the manual.

**Question:** What can I do if the image is blurred or distorted?

**Answers:**

- Adjust the focus ring by moving it left/right until it displays the correct image.
- Place the projector on a flat surface horizontally or vertically. Tilting at any angle may cause blurring or uneven colors.
- A darker environment is suggested for the best professional cinema performance.
- The proper distance between the projector and the projection screen / wall is 2.6 - 14.5 feet / 30 inches - 200 inches.
- If possible, the projection wall / screen should be white and clean.

**Question:** What can I do if the picture is upside down?

**Answers:**

- Press "Menu" on the remote control to enter the Settings. Then select "Projection Mode". Press "OK" button to rotate the image.

**Question:** What can I do if the projection screen is not square or horizontally allied?

**Answers:**

- Make sure the projector is placed on a flat surface with the projector light in the center of the screen.
- Make sure the projector screen is positioned horizontally.

**Question:** What can I do if there is color distortion?

**Answers:**

- Make sure that the video source has a fine resolution.
- Adjust the colors: go to Menu - Image - Color Temperature, then select the different modes and adjust the appropriate value.
- Reset the projector to factory settings: go to Menu - System - Reset to factory settings to reset.

**Question:** What can I do if the projected image has lines or appears blurry?

**Answer:** Please reset it to see if it can be solved. The lines or blurred image is due to the motherboard or the display. If you are unable to fix it, please contact our customer service team for assistance.

## **REMOTE CONTROL**

**Question:** What can I do if the remote control does not respond?

**Answers:**

- Make sure the batteries are installed correctly and the power is sufficient.
- Please make sure that the infrared receiver is not covered.
- Please contact our customer service team for a replacement.

## **CONFIGURATION**

**Question:** How can I change the language?

**Answer:** Press "Menu" on the remote control to enter the system setup. Enter "OSD Language".

## **DISPLAY**

**Question:** ¿ What should I do if there are small dots on the screen?

**Answers:**

- Lightly and very gently tap the projector to shake off any dust that may have occurred during installation or transport.
- Clean the lens with fiber-free (non-woven) cloths.

## **DAMAGE**

**Question:** ¿ What should I do if a dark spot expands or smoke comes out when using the projector?

**Answers:**

- Check if the fan noise increases or if the fan stops working. Unplug the projector and contact our customer service team for assistance.
- Make sure the projector's power outlet and power adapter are not wet or damp, which will cause sparks or smoke from the power outlet when the projector is turned on.

## **APAGADO**

**Question:** Why does the projector turn off during playback?

**Answers:**

- Make sure the power plug is working and is securely attached to the power outlet.
- If the fan does not work when in use, please contact our customer service team for assistance.
- Overheating of the projector will activate the built-in shutdown protection panel. Restart the projector when it cools down.

## **3D**

**Question:** Does this projector support the 3D effect?

**Answers:**

- The projector supports 3D video sources, and 3D viewing performance can be achieved with red-blue 3D glasses; but please understand that the experience will not be better than in the theater and we do not recommend it if you have a higher expectation on the 3D effect.



## USB

**Question:** ¿ Why nothing works on the main interface, especially with external storage connected?

**Answer:** The correct input source must be selected when using the USB disk, otherwise no signal will be shown on the display, REMEMBER THAT THE USB-T PORT IS ONLY FOR CHARGING MOBILE DEVICES, IT DOES NOT SERVE AS INPUT.

## LAMP

**Question:** Why doesn't the projector lamp light up?

**Answer:** Please contact our customer service team for further assistance.

## CONNECTION

**Question:** Are the projector ports not working?

**Answer:** Try changing the cable. If it still cannot be resolved, please contact our customer service team for assistance.

## MAC

**Question:** No sound on projector connected to MAC?

Answers:

- Select apple menu > system preferences, then click sound. In the output panel, make sure your input is correctly selected.
- If using the mini Display Port converter to connect, make sure your Mac can connect through mini Display Port to send audio.
- If connecting from the Mac mini, disconnect any audio devices that are connected to the computer's audio output port.

## SCREEN MIRRORING

**Question:** ¿ Can't mirror the video on the projector? Or is there sound or image in the mirrored image? No image or sound?

**Answers:**

- Copyrighted videos sometimes cannot be mirrored on the same screen, e.g. (prime, Hulu, Netflix, Disney+).
- Is the source resolution too high (e.g. 4k, 8k) ? Or the refresh rate of the video exceeds 60hz? Please note that the projector only supports 60Hz and the video source cannot exceed 1080P.

- (Prime, Hulu, Netflix, Disney+) streaming copyrighted media may try to play the same screen on the website.

**Question:** Screen mirror jam, frame drop, lag, auto shutdown?

**Answer:** The smoothness of the screen image is related to the quality of the network.

**Question:** Screen Mirroring cannot connect to the network?

**Answer:**

- The home router is fully connected (sometimes the connection of our cell phones is not successful, and the router itself limits the number of connected devices).

- The password entered is incorrect (check the password).

- The machine is too far away from the router device.

- If the machine's WiFi fails, turn it off and on to test it, or restore the factory settings once.

## **ASSEMBLY**

**Question:** What type of screws do I need to mount this projector?

**Answer:** ¼ inch screw